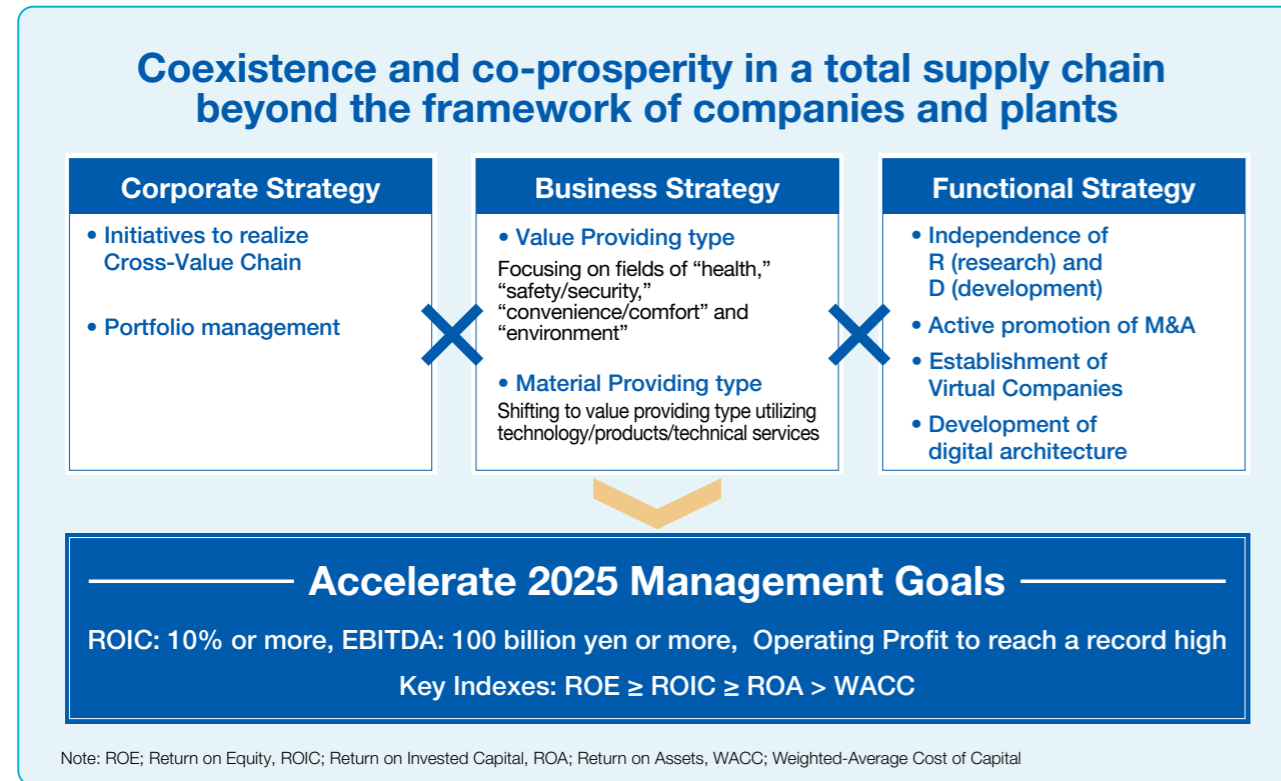
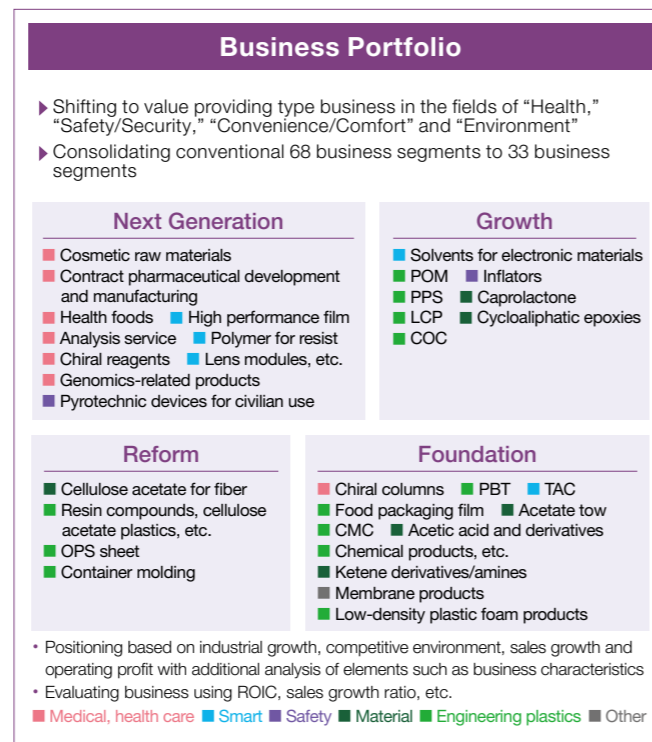
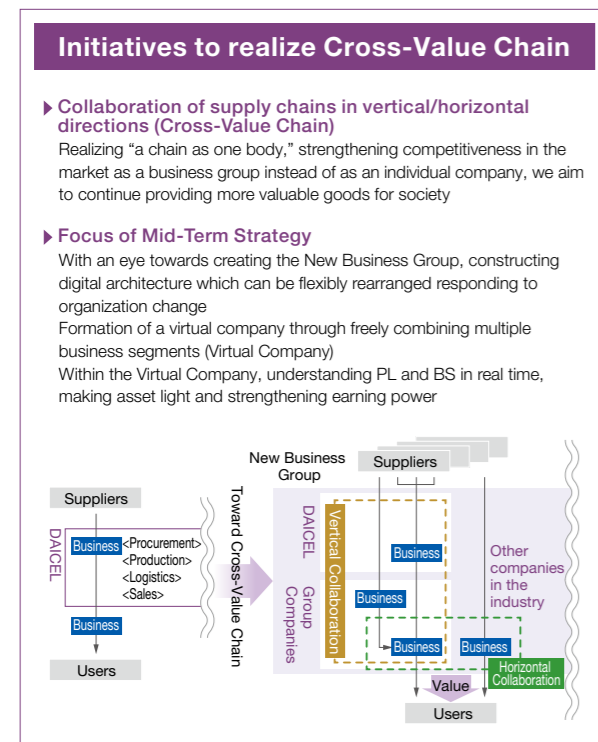


Accelerate 2025 Mid-Term Strategy

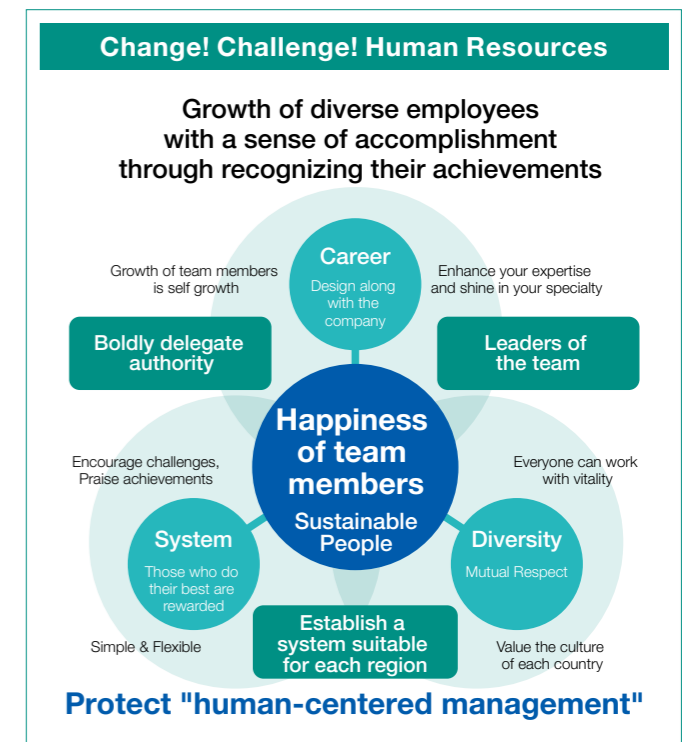
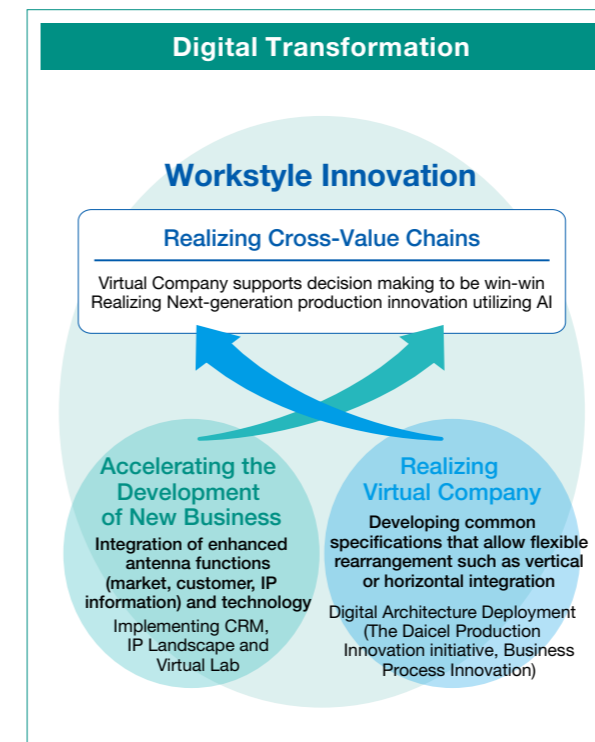
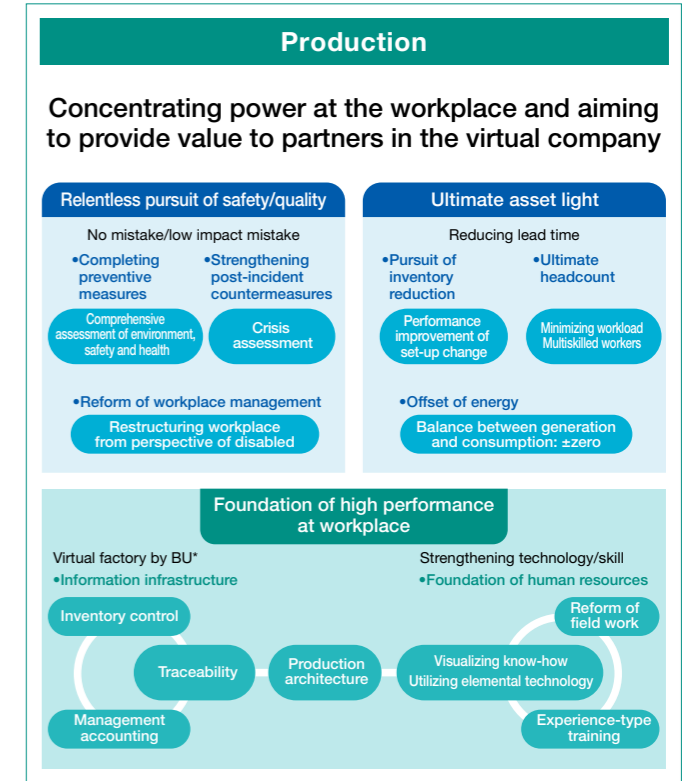
We will execute our Accelerate 2025 Mid-Term Strategy, consisting of the corporate strategy, SBU-specific business strategies, and functional strategy, to evolve into a new business group that goes beyond the conventional concept of a company achieving the goals of Operation-III.



Corporate Strategy



Functional Strategy



*BU: Business Unit